

3/25/2019

TOOLS NEEDED: 4MM ALLEN WRENCH MASKING TAPE 1/4" DRILL BIT AND DRILL
FINE POINT PEN REMOVABLE THREAD LOCK CENTER PUNCH & HAMMER

NOTE: READ INSTRUCTIONS BEFORE PROCEEDING.

NOTE: WE RECOMMEND USING REMOVABLE THREAD LOCK ON ALL HARDWARE INSTALLED.

INSTALLATION:**TRUNK WITHOUT SPOILER**

1. PLACE BIKE ON CENTER STAND.
2. INSTALL ONE OF THE FOUR SHORT FEET ON EACH OF THE FOUR THREADED STUDS LOCATED ON THE BOTTOM OF THE TRUNK RACK AND TIGHTEN AS TIGHT AS POSSIBLE BY HAND.
3. LIGHTLY POSITION THE RACK SQUARELY ON THE TRUNK LID AS PER YOUR PREFERENCE BEING CAREFUL NOT TO SCRATCH THE TRUNK LID.
4. LIFT RACK SLIGHTLY AND PLACE THREE 3"-4" PIECES OF MASKING TAPE UNDER EACH LEG. (**FIG. B**)
5. USING A FINE POINT PEN, OUTLINE EACH OF THE FOUR MOUNTING FEET ONTO THE TAPE STRIPS.
6. REPOSITION THE RACK OVER THE MARKED CIRCLES TO MAKE CERTAIN THE RACK IS IN THE EXACT LOCATION YOU DESIRE. (IF NECESSARY, REMARK ANY INCORRECT CIRCLES MARKINGS.)
7. SET THE RACK ASIDE. USING THE CENTER PUNCH, MARK THE HOLE CENTERS IN THE FOUR MOUNTING LOCATIONS. DRILL A 1/4" HOLE THROUGH THE LID AT EACH HOLE CENTER.
8. CAREFULLY REMOVE ALL MASKING TAPE FROM THE LID AND ATTACH THE RACK ACCORDING TO **FIGURE A**. MAKE SURE THE BOTTOM OF THE TAPERED WASHERS MATCH THE INNER TRUNK LID PROFILE.

IMPORTANT:

1. DO NOT OVER TIGHTEN THE (4) MOUNTING SCREWS – THERE IS A SPACE BETWEEN THE INNER & OUTER TRUNK LID. OVER TIGHTENING MAY CAUSE DAMAGE TO THE OUTER LID.
2. THIS RACK WAS DESIGNED TO SAFELY CARRY A WEIGHT LOAD OF TEN POUNDS, OVERLOADING THE RACK MAY CAUSE DAMAGE TO THE TRUNK LID.

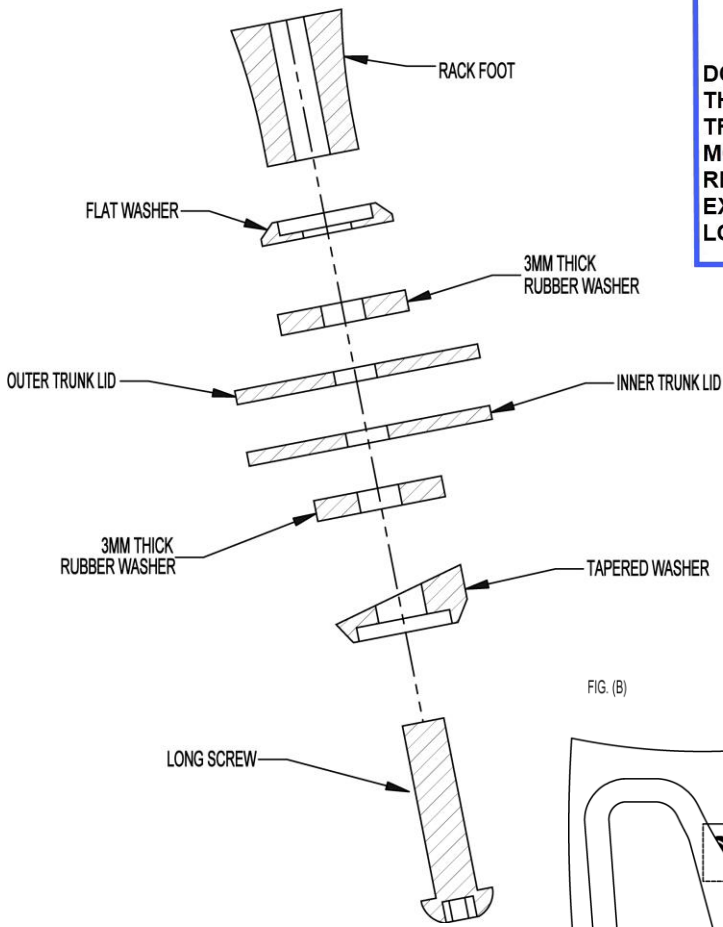
TRUNK WITH SPOILER:

1. PLACE BIKE ON CENTER STAND.
2. INSTALL ONE OF THE TWO LONG FEET ON EACH OF THE TWO FRONT THREADED STUDS AND ONE OF THE SHORT FEET ON EACH OF THE TWO REAR STUDS LOCATED ON THE BOTTOM OF THE TRUNK RACK AND TIGHTEN AS TIGHT AS POSSIBLE BY HAND.
3. LIGHTLY POSITION THE RACK SQUARELY ON THE TRUNK LID/SPOILER AS PER YOUR PREFERENCE BEING CAREFUL NOT TO SCRATCH THE TRUNK LID.
4. LIFT RACK SLIGHTLY AND PLACE THREE 3"-4" PIECES OF MASKING TAPE UNDER EACH LEG. (**FIG. B**)
5. USING A FINE POINT PEN, OUTLINE EACH OF THE TWO FRONT MOUNTING FEET ONTO THE TAPE STRIPS.
6. REPOSITION THE RACK OVER THE MARKED CIRCLES TO MAKE CERTAIN THE RACK IS IN THE EXACT LOCATION YOU DESIRE. (IF NECESSARY, REMARK ANY INCORRECT CIRCLES MARKINGS.)
7. SET THE RACK ASIDE. USING THE CENTER PUNCH, MARK THE HOLE CENTERS IN THE TWO MOUNTING LOCATIONS. DRILL A 1/4" HOLE THROUGH THE LID AT EACH HOLE CENTER.
8. CAREFULLY REMOVE ALL MASKING TAPE FROM THE LID AND ATTACH THE FRONT FEET OF THE RACK ACCORDING TO **FIGURE A**, ROTATING THE TAPERED WASHER SO THE THICK PORTION IS TOWARDS THE FRONT OF THE TRUNK.
9. ATTACH THE BACK FEET ACCORDING TO **FIGURE C**, MAKING SURE THAT THE COUNTERSUNK TAPERED WASHER MATCHES THE PROFILE OF THE SPOILER. REMOVE THE BACKER FROM ONE SIDE OF THE RUBBER WASHER WITH TAPE AND ADHERE IT TO THE INSIDE OF THE COUNTERSUNK TAPERED WASHER.
10. USING A MILD SOLVENT, SUCH AS RUBBING ALCOHOL, APPLIED WITH A CLEAN, LINT FREE RAG CLEAN THE SURFACE OF THE SPOILER THE RUBBER WASHER WITH TAPE WILL ADHERE THE BACK FEET TO THE SPOILER. THEN REMOVE THE BACKER FROM THE OTHER SIDE OF THE RUBBER WASHER WITH TAPE AND ADHERE IT TO THE SPOILER. APPLY PRESSURE TO THE RACK, PLACING WEIGHT ON THE SPOILER FOR 24 HOURS THIS WILL HELP THE TAPE STICK TO THE SPOILER.

IMPORTANT:

1. DO NOT OVER TIGHTEN THE (2) MOUNTING SCREWS – THERE IS A SPACE BETWEEN THE INNER & OUTER TRUNK LID. OVER TIGHTENING MAY CAUSE DAMAGE TO THE OUTER LID.
2. THIS RACK WAS DESIGNED TO SAFELY CARRY A WEIGHT LOAD OF TEN POUNDS, OVERLOADING THE RACK MAY CAUSE DAMAGE TO THE TRUNK LID.

FIG. (A)



NOTICE

DO NOT EXCEED THE LOAD CAPACITY THAT IS SPECIFIED BY THE VEHICLE MANUFACTURER. EXCESSIVE LOADING ON THE TRUNK LUGGAGE RACK MAY CAUSE LOSS, DAMAGE TO THE MOTORCYCLE OR INJURY. BIG BIKE PARTS IS NOT RESPONSIBLE FOR LOSS, DAMAGE OR INJURY CAUSED DUE TO EXCESSIVE LOADS OVER THE VEHICLE MANUFACTURER'S LOAD SPECIFICATIONS ON THE LUGGAGE RACK.

FIG. (B)

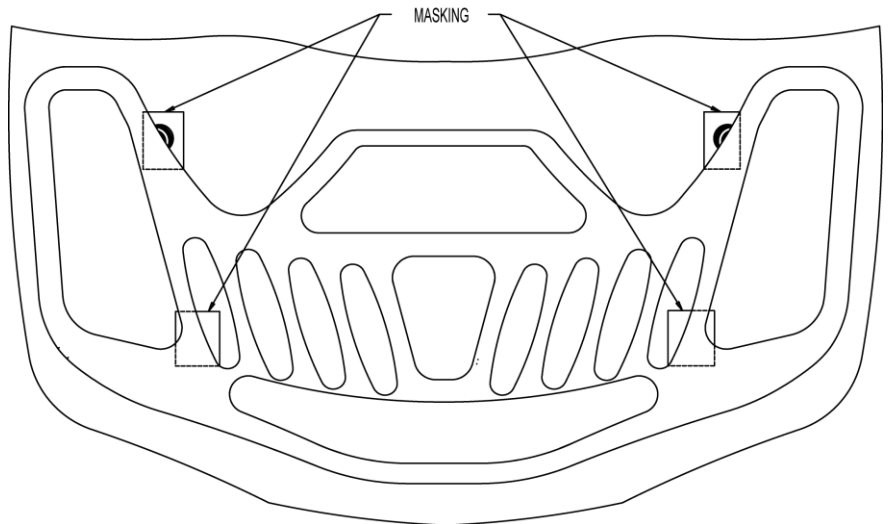
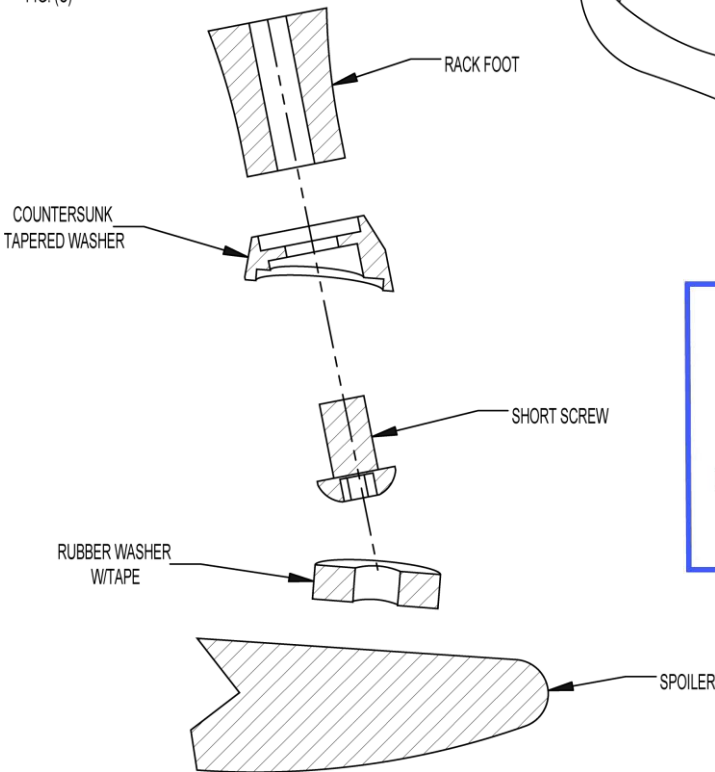


FIG. (C)



NOTICE

IGNORING THE CONTENTS OF THESE INSTRUCTIONS MAY AFFECT THE PRODUCT PERFORMANCE AND FUNCTIONALITY. NOT FOLLOWING THESE INSTRUCTION MAY CAUSE DAMAGE TO THE PRODUCT OR THE VEHICLE TO WHICH IT IS BEING ATTACHED.