



INSTALLATION INSTRUCTIONS

Embark on Your Journey with Confidence.

These instructions are for both riders and dealers – written as a step-by-step guide with an eye for detail, just like our products. It’s all part of your experience with Show Chrome, and we take that seriously.

Please review the instructions before diving in, and if things get uncomfortable, don’t hesitate. Reach out to us. We're here to help and offer direct, human customer service based in Rice Lake, WI, USA – every time at 888-244-2453. Ride safely, and ride often.

Scan the QR code to discover the product:



Final Product:

52-974 INSTALLED SHOWN



52-974BK INSTALLED SHOWN



Product: NON-FOLDING FLAG POLE
Part # 52-974/52-974BK

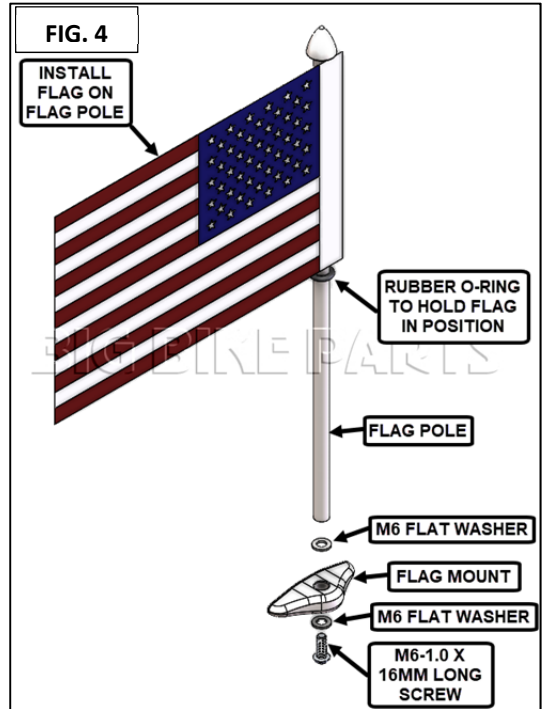
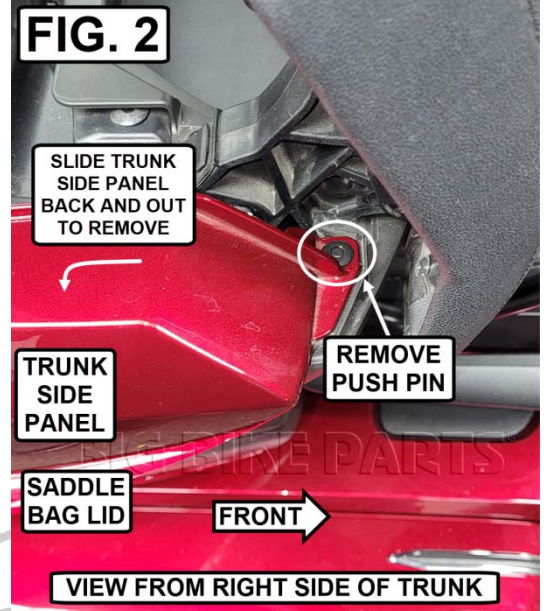
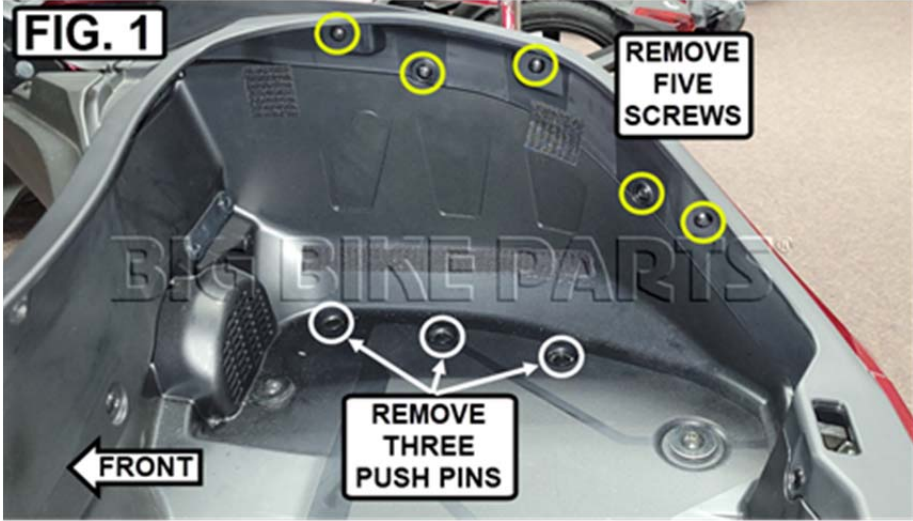
INSTALLATION TIME: 20 TO 40 MIN

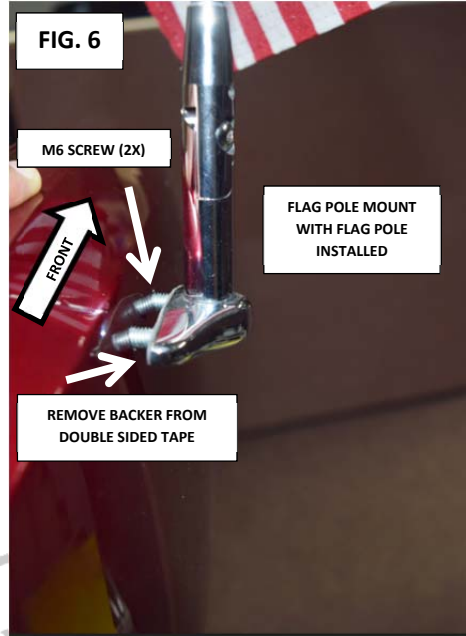
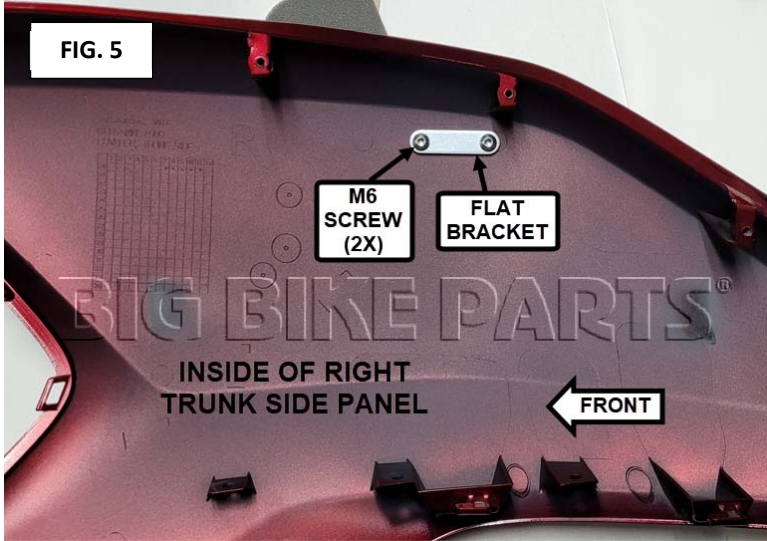
Fitment: HONDA GOLD WING TOUR 2021 +

TOOLS NEEDED:	RUBBING ALCOHOL	CLEAN LINT FREE RAG	DRILL	1/4" DRILL BIT	4MM ALLEN WRENCH
	REMOVABLE THREAD LOCK	MASKING TAPE	PENCIL	5MM ALLEN WRENCH	
INCLUDED:	FLAG MOUNT	FLAG POLE	FLAG POLE CAP	FLAT BRACKET	M6 SCREWS (2X)
	M6 FLAT WASHER (2X)	M6-1.0 X 16MM LONG SCREW			

INSTRUCTIONS

1. Open the trunk lid.
2. Starting on the right side of the bike, remove the five (5) screws shown in **FIG. 1**.
3. Remove the three (3) push pins shown in **FIG. 1** by pressing the center in and pulling the push pin out.
4. Remove the push pin shown in **FIG. 2** by pressing the center in and pulling the push pin out.
5. Remove the trunk side panel by sliding it straight back towards the rear of the bike and out. Set on a clean surface or towel.
6. Place a piece of MASKING TAPE on the trunk side panel as shown in **FIG. 3**.
7. Mark the location of the two holes according to **FIG. 3**.
 - **NOTE:** Be sure hole locations marked are accurately placed before drilling.
8. Using a ¼" DRILL BIT, drill two ¼" holes on the marks from step 7 (**FIG. 3**) through the trunk side panel.
 - **NOTE:** Show Chrome recommends using a brad point drill bit when drilling plastic to avoid damaging or breaking the plastic panels.
9. Remove the MASKING TAPE and any burs from drilling.
10. Remove the FLAG POLE components from the packaging.
11. Remove O-ring from the FLAG POLE and install the FLAG onto the FLAG POLE by sliding it up from the bottom (**FIG. 4**).
12. Reinstall the O-ring onto the FLAG POLE to keep the FLAG in position at the top of the FLAG POLE (**FIG. 4**).
13. Install the FLAG POLE on the FLAG POLE MOUNT using the M6-1.0 x 16MM LONG SCREW and two M6 FLAT WASHERS (**FIG. 4**).
 - **NOTE:** Use REMOVABLE THREAD LOCK when installing the M6-1.0 x 16MM LONG SCREW and when installing the FLAG POLE CAP.
 - **NOTE:** Do not over torque screw or apply excess force to the M6-1.0 x 16MM LONG SCREW that holds the FLAG POLE to the FLAG MOUNT.
 - **NOTE:** Ensure all remaining hardware is secure. If any hardware becomes loose, additional thread locker may be applied.
14. Use RUBBING ALCOHOL and a CLEAN LINT FREE RAG to clean the outside surface of the trunk side panel where the FLAG POLE MOUNT will be installed.
15. From the inside of the trunk side panel, place the FLAT BRACKET in position using the two supplied M6 SCREWS (**FIG. 5**).
16. Carefully apply a small drop of REMOVABLE THREAD LOCK to each threaded hole on the FLAG POLE MOUNT.
 - **NOTE:** Be sure thread lock does not come in contact with the plastic panels or damage may occur.
17. Remove the backer from the double sided tape on the FLAG POLE MOUNT (**FIG. 6**).
 - **NOTE:** Be sure not to touch the adhesive on the double sided tape before installing the FLAG POLE MOUNT in place.
18. With both screws started in the FLAG POLE MOUNT, press the mount firmly in place against the trunk.
19. Tighten the two screws to secure.
 - **NOTE:** Do not over tighten screws or the plastic panels may crack or break.
 - **NOTE:** Tighten FLAG MOUNT UNTIL FLAG POLE has no more slack/back and forth movement.
20. Repeat steps 1 through 5 in reverse order to assemble the trunk.
21. Repeat steps 1 through 20 on left side if installing 2 flag poles.





WARNING

THREADLOCK CAUSES PLASTICS TO CRACK, BREAK OR BECOME BRITTLE. WHEN USING THREADLOCK TO INSTALL HARDWARE WITH PLASTIC COMPONENTS, ONLY APPLY TO METAL COMPONENTS. IT IS **CRITICAL THAT ANY EXCESS THREADLOCKER OR SPILLAGE IS CLEANED COMPLETELY FROM PLASTIC COMPONENTS IMMEDIATELY BEFORE DRYING.** A DAMP TOWEL OR RAG IS THE BEST WAY TO ACHIEVE THIS. IF EXCESS THREADLOCKER IS NOT CLEANED UP RIGHT AWAY, IT COULD LEAD TO DAMAGED PRODUCTS AND VOID WARRANTY.

NOTICE

THIS IS AN ADHESIVE BACKED PRODUCT. CAUTION MUST BE TAKEN DURING INSTALLATION TO PROPERLY POSITION FOR ONE TIME PLACEMENT. REPEAT TRIALS WILL RESULT IN FAILURE OF THE ADHESIVE.

NOTICE

IGNORING THE CONTENTS OF THESE INSTRUCTIONS MAY AFFECT THE PRODUCT PERFORMANCE AND FUNCTIONALITY. NOT FOLLOWING THESE INSTRUCTION MAY CAUSE DAMAGE TO THE PRODUCT OR THE VEHICLE TO WHICH IT IS BEING ATTACHED.